

RAISE Doctoral Networks for AI in Science

HORIZON-RAISE-2026-01-03

EUR 30 Million

| Deadline: 24 November 2026, 17:00 Brussels

Presenter Name · Institution · April 1, 2026

- ▶ **RAISE** = Resource for AI in Science in Europe
- ▶ Virtual research institute launched November 2025
- ▶ EUR 107 M pilot under Horizon Europe
- ▶ Four pillars:
 - Computational Power
 - Data
 - **Talent** ← *this presentation*
 - Funding
- ▶ The **Talent** pillar funds **Doctoral Networks** (DNs)
- ▶ This talk: everything you need to know about the RAISE DN call

Key Facts

Call identifier	HORIZON-RAISE-2026-01-03
Action type	TMA – Doctoral Networks
Total budget	EUR 30 million
Call opens	28 May 2026
Submission deadline	24 November 2026 (17:00 CET, Brussels)
Number of projects	Depends on proposal quality and size

Proposals are submitted via the [Funding & Tenders portal](#) under the MSCA Doctoral Networks call.

1. **Second-chance mechanism** – Strong MSCA proposals get a second funding pathway through the RAISE budget
2. **RAISE community membership** – Access to shared AI infrastructure, data, and a pan-European research community
3. **Dual evaluation track** – Your proposal can be funded via the main MSCA budget *or* the RAISE budget
4. **Cross-disciplinary openness** – All scientific disciplines welcome, not only STEM
5. **AI-focus premium** – Aligns with growing EU investment in AI for science (EUR 3 B+ annual target)

Every doctoral project in the network must meet **all** of the following:

1. Doctoral candidates must **develop** or **significantly participate** in developing innovative AI systems, models, or tools
2. AI must **substantially innovate** how scientific information is analysed
3. AI development must be **integral and indispensable** to the research
4. Scientific advancements must be **directly dependent** on the AI
5. All candidates must receive dedicated **doctoral-level AI training**

Key word: *integral, not merely instrumental.*

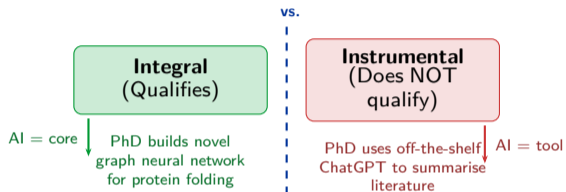
Does **not** qualify:

- ▶ Pure CS/AI research published only in CS venues
- ▶ **Instrumental** use of existing AI tools for data processing
- ▶ Using general-purpose tools without innovation

Key distinction:

Developing new AI *for* science ✓

Using existing AI *as* a tool ✗



	Standard DN	Industrial Doctorates	Joint Doctorates
Max duration	48 months	48 months	60 months
Key feature	Standard partnerships	Strong non-academic sector	Joint/multiple degrees
Secondment rule	Up to 50% of fellowship	No cap (min 50% in non-academic sector)	No cap
Fellowship per DC	3–36 months	3–36 months	3–48 months
Max person-months	540	540	540

All three types are eligible under the RAISE DN call. Choose based on consortium structure.

- ▶ Minimum **3 independent legal entities** from **3 different** EU Member States or Associated Countries
- ▶ At least **1 entity must be in an EU Member State**
- ▶ Every beneficiary must employ **at least 1 doctoral candidate**
- ▶ Funding concentration cap: max **40%** of EU contribution to same-country beneficiaries
- ▶ Same 40% cap applies to international organisations
- ▶ Proposal length: max **30 pages** (excluding attachments)

China Exclusion

Legal entities established in **China** are **not eligible** to participate as beneficiaries, affiliated entities, or associated partners.

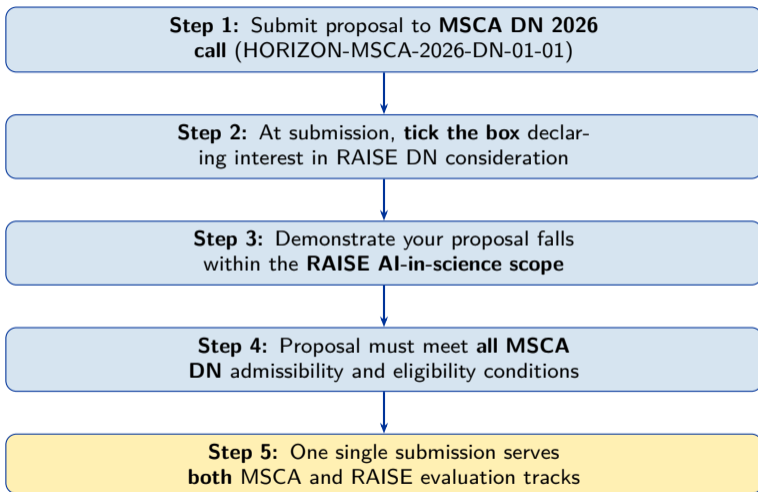
Core Rule

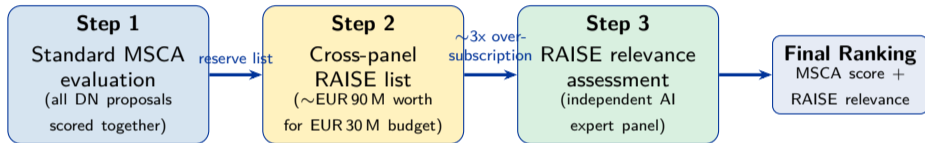
A recruited researcher must **not** have resided or carried out their main activity in the country of the recruiting beneficiary for more than **12 months in the 36 months** immediately before the recruitment date.

Exceptions:

- ▶ Refugees and EU temporary-protection beneficiaries are **exempt**
- ▶ Compulsory national service is **not counted**
- ▶ Short stays (conferences, holidays) are **not counted**

This rule ensures cross-border mobility – a core MSCA principle.





Strong proposals that narrowly miss MSCA main-list funding get a second chance via RAISE

Criterion	Weight	Max Score
Excellence	50%	5.0
Impact	30%	5.0
Implementation	20%	5.0

Thresholds and Scoring Rules

- ▶ Scoring scale: **0 to 5**, resolved to **one decimal place**
- ▶ Individual criterion threshold: **3.0 out of 5.0**
- ▶ Overall funding threshold: **70%** (i.e., weighted score $\geq 3.5/5.0$)
- ▶ Proposals below *any* threshold are not funded

1. **Quality and pertinence of R&I objectives**

Ambitious goals that go beyond the state of the art

2. **Soundness of methodology**

Interdisciplinary approach, gender dimension, open-science practices

3. **Quality and credibility of training programme**

Transferable skills, inter-/multidisciplinary, inter-sectoral components

4. **Quality of supervision**

Mandatory joint supervision for Industrial and Joint Doctorates

This is the most heavily weighted criterion – invest the most proposal effort here.

Impact (30%)

- ▶ Contribution to structuring doctoral training at **European level**
- ▶ Career perspectives, **employability**, skills development
- ▶ Dissemination, exploitation, and communication measures
- ▶ Magnitude of **scientific, societal, and economic** impacts

Implementation (20%)

- ▶ Quality and effectiveness of **work plan**
- ▶ Risk assessment and appropriateness of effort per work package
- ▶ Capacity and **role of each participant**, hosting arrangements
- ▶ Consortium bringing **necessary expertise**

Code Panel

CHE Chemistry

SOC Social Sciences & Humanities

ECO Economic Sciences

ENG Information Sci. & Engineering

ENV Environment & Geosciences

LIF Life Sciences

MAT Mathematics

PHY Physics

Budget allocation:

Distributed proportionally to eligible proposals per panel.

Tie-breaking order:

1. Excellence score
2. Impact score
3. Gender balance of supervisors
4. Other factors (Green Charter, SME participation, geographical diversity)

MSCA DN 2025 data (most recent round):

- ▶ 1,616 proposals submitted, 141 funded
- ▶ Overall success rate: **8.8%** (down from 10.5% in 2024, 12.0% in 2023)
- ▶ Average cut-off score: **94.9%**
- ▶ Range: 89.8% (Economics) to 97.8% (Environment)

RAISE Advantage

Adds a **second funding chance** for strong AI-in-science proposals that narrowly miss the MSCA main list.

Resubmission Rule

Proposals scoring **below 80%** cannot be resubmitted the following year.
($\geq 70\%$ of same recruiting organisations triggers resubmission check.)

Component	EUR/month	Note
Living allowance	4,250	Adjusted by country correction coeff. (CCC)
Mobility allowance	710	Fixed
Family allowance	660	If applicable
Researcher subtotal	5,620	<i>Maximum with family</i>
Research, training, networking	1,600	Paid to institution
Management & indirect	1,200	Paid to institution
Institutional subtotal	2,800	
TOTAL per researcher/month	~8,420	<i>Max with family</i>

Employment contract mandatory. Fellowship option: living allowance **halved**.

Higher CCC		Lower CCC	
Switzerland	163.7%	Poland	77.5%
UK	143.5%	Bulgaria	70.0%
Ireland	135.8%	Romania	72.6%
Denmark	131.3%	Turkey	70.0%
Mid-range			
France	116.6%	Germany	101.5%
Netherlands	111.8%	Belgium	100.0%

How it works:

CCC adjusts the EUR 4,250 living allowance to local cost of living.

Example calculations:

▶ Germany:

$$\text{EUR } 4,250 \times 101.5\% \\ = \text{EUR } 4,313.75/\text{month}$$

▶ Denmark:

$$\text{EUR } 4,250 \times 131.3\% \\ = \text{EUR } 5,580.25/\text{month}$$



1. **Excellence:** Frame AI as the **central methodology**, not an auxiliary tool; show how it advances the state of the art in the scientific domain
2. **AI scope:** Make the **integral vs. instrumental** distinction crystal clear in your proposal text
3. **Impact:** Articulate how the network structures doctoral training at **European level**; include non-academic partners for employability
4. **Implementation:** Demonstrate clear work packages with AI development **delineated**; show consortium expertise balance
5. **Supervision:** Plan **joint supervision** arrangements (mandatory for Industrial and Joint Doctorate types)
6. **RAISE relevance:** Explicitly connect **every** doctoral project to the RAISE AI-in-science definition